



Powerful and Cost Effective Scanning Software

ScanWiz is a part of PowerFile imaging suite of products.

ScanWiz - Is a single user or enterprise, standalone or distributed scanning, capture and Indexing software application. It has many features and modules such as:

- It allows distributed scanning & data capture of paper documents from any scanner, fax machine, file system or multi-function scan device.
- It allows quick indexing of these captured images using a variety of tools like key-on-image and recognition engines.
- It allows for the clean up of scanned documents using tools that remove speckles, de-skew images, adjust page orientation and a variety of other features.
- ScanWiz has user friendly tools and interfaces to help mark and structure different document types.
- It can use recognition engines to OCR, ICR and OMR images to extract data.
- During Indexing – it can validate data based on already available databases and excel spreadsheets and allow users to export validated data in a wide range of formats. It works with many back-end systems including IBM Content Manager, Microsoft SharePoint, Filenet and others.

The controls and libraries have been developed to also get deployed as components which integrate into existing production workflows and systems.

ScanWiz provides robust, scalable, efficient, accurate and cost effective scanning solutions to a whole range of image and data extraction needs and supplies production systems to Business Processing Outsourcing companies.

ScanWiz ensures that your scanning is as efficient and as easy as possible, while also improving both the quality of the scanned images and the automated capture of information from your paper documents and forms. The result is - lower scanning costs, lower data entry costs and faster access to your information.

You handle a wide variety of documents and forms. Some are on colored paper, some are of unusual sizes, some are hard-to-read carbon copies and some are photocopies of photocopies.

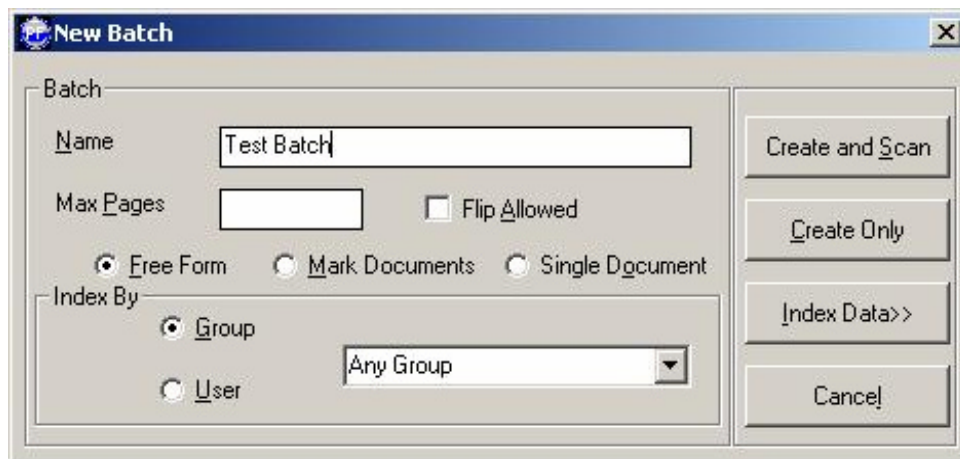
You can improve your chances of getting good images by carefully preparing your documents before scanning. That means manually separating color documents from black and white, organizing them by size and condition, removing blank pages and rotating pages so that they are all oriented in the same direction. All these features are available with ScanWiz, the ultimate scanning productivity tool that makes scanning as automated, efficient and easy while improving image quality.



SCANWIZ COMPRISES

Scan

This module provides support for all popular TWAIN compliant scanners desktop or production and allows import from other sources such as hard disk, unattended scanners or fax servers. Images may be batched according to user-defined rules and naming conventions.



Control screens are highly configurable and can be programmed to provide a simple interface for scanner operators.

Image Re-view

Image viewing of all the pages in batch form by flipping over pages gives the users a feel that all documents are bunched together. The user friendly features like Replace, Insert before, Insert after and discard pages gives user greater flexibility to organize documents for publishing. The high performance viewer delivers many capabilities to display and manipulate images, such as: Fast scaling (zoom in and out), Rotation (90 degree increments), Fit to page, Fit to width, etc.

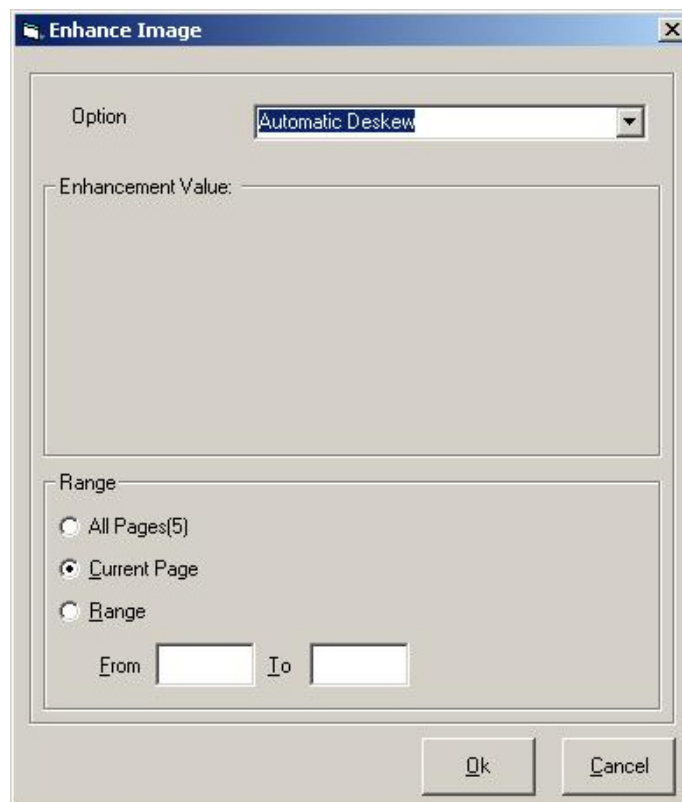


Image Enhancement

ScanWiz supports numerous filters to "clean-up" a scanned image and its ability to use both black & White and color processes also helps to improve image clarity. Some of the features are: Auto deskew, Auto line removal, Dot removal, enhance color, extract, whiteout, etc.



Recognition

This feature of ScanWiz aims to ensure high recognition accuracy by ensuring that the scanned images are of suitably high quality. It uses a combination of de-skewing, de-speckling, noise and line removal to improve the initial image. The registration method automatically registers an image against its respective template, matching the fields to the zones for later recognition and correcting problems introduced in the scanning process.

Delivery

The Delivery module outputs data and images in many formats, including XML, PDF, HTML, ASCII and word processing files. Interfaces to ODBC compliant databases and many of the leading ERP, database, workflow, document and content management systems can be provided including IBM CM and Microsoft Share Point.

FEATURES OF SCANWIZ

Scanning

- Batch mode scanning of paper document.
- Strong “Flip allowed” feature & merges front and back pages for scanning both side printed documents using simplex scanner.
- Supports all scanners complaint with TWAIN and ISIS scanning interface.
- Scanning to any DMS or work flow system.

User Friendly Document Verification

- Displays scanned images for image verification.
- Scan unlimited numbers of pages into existing batch.
- Rescan a bad image, insert pages into batch and delete image.
- Verification of scanned documents by flipping pages.
- Rearranging images in batch to fix document sequencing by moving pages from one place to another.
- Making a multiple copy of a page by scanning once.

Sophisticated Imaging Controls

- Fit to length, fit to width, fit to page controls for clear view of image.
- All standard Image enhancement controls such as Auto deskew, de-speckle, rotate, invert, Rotate 90, 180, 270, zoom-in, zoom-out, zoom to percentage, etc.
- Zoom to part of the image by simply marking the area.
- Navigation to next page, previous page, first page, last page, specific page, etc.
- Auto scroll – scrolls pages after a specific interval allowing keyboard and mouse free scrolling of documents.